



# Kalihi Waena Elementary School Newsletter



Issue no. 2 • 1240 Gulick Avenue Honolulu, HI 96819 • [www.kwes.k12.hi.us](http://www.kwes.k12.hi.us) • October 2019

**Get  
Connected!**



**Check out our website:**  
[www.kwes.k12.hi.us/](http://www.kwes.k12.hi.us/)



**Like our Facebook Page:**  
[https://www.facebook.com  
/www.kwes.k12.hi.us/](https://www.facebook.com/www.kwes.k12.hi.us/) OR  
<http://tinyurl.com/jrqu652>

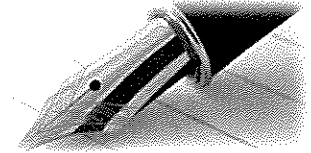


**Follow us on Instagram:**  
*(Under construction...  
Coming soon!)*



**Follow us on Twitter:**  
[@KalihiWaenaEI](https://twitter.com/KalihiWaenaEI)

## Principal's Message



Hello LION OHANA!

I hope everyone has had a great first quarter. I know I have. We have a few special announcements to mention.

We would like to extend a huge Lion welcome to Mrs. Debra Heyler who will be joining our school as our Vice-Principal. Ms. Heyler is an experienced Hawaii educator who is transferring from Puuhale Elementary School to join the Lion Ohana. She has many years of experience working throughout the Hawaii DOE, most recently at Ka'elepulu Elementary School as a VP and Olomana School doing many different jobs. She is a native of Hawaii and is currently studying at the University of Hawaii on her Educational Administration coursework. We are all so very excited to have her coming on board to assist us in our future endeavors.

We will also be thanking Ms. Bella Willing who stepped up to fill in as the Vice Principal this quarter. She will be returning to her role as an Academic Coach. Thank you very much for all you have done Ms. Willing!

I would also like to thank all the students and parents of the school this year for your trust and support. This quarter has flown by and it has been a great one. As the year is ramping up so are our awesome students. Our Cheerleaders just performed at the Farrington High School Song Contest, our football team is in the middle of our season, and our other after school activities are getting ready to show us what they have learned. Please follow us on Twitter and Like our Facebook page to keep up to date on all we have done here. Great job LIONS!

Have a wonderful start to Quarter 2 and remember, "We are the LIONS and we are the FUTURE!!!"

A Hui Hou,

Mr. Daniel O. Larkin  
Principal



### VISION

Kalihi Waena, a place of excellence, is committed to lifelong learning, student growth and nurturing the whole child.

### MISSION

Everyone working together for students to meet Common Core State Standards and prepare students to be college and career ready.

## **The Official School Day**

School begins at 7:55 a.m., with the tardy bell ringing at 8:00 a.m., Monday through Friday, excluding holidays and non-instructional days. Students are dismissed at 2:15 p.m. with the exception of Wednesday, when dismissal is at 1:30 p.m.

Once the warning bell rings at 7:55 a.m., all parents, guardians and/or family members who are on campus should leave unless you attain special permission from the principal. Also, please remember that unauthorized persons are not allowed on the 2<sup>nd</sup> floor until after the bells rings at 2:15 p.m. (1:30 p.m. on Wednesdays).

Please do not send your child to school too early in the morning since there is no one to supervise them before school begins. Students should not play, roam or loiter on school grounds, including the playground equipment, before and after school and on non-school days.

If your child is going to be tardy or absent, please call the office @ 832-3210. At that time, you may also request and make arrangements to pick up your child's homework so they can keep up with the lessons.

Thank you for your cooperation ahead of time. We appreciate your collaboration and working together as a team to promote student achievement.



## **Notice and Request for Accommodations**

If you are an individual with a disability, please contact the following personnel to make arrangements for reasonable modifications and accessibility to school events at least 10 days in advance of the event that you wish to attend. Reasonable efforts will be made to accommodate your request. Please contact Principal, Mr. Larkin at 832-3210. Thank you.



## **Playground Equipment Off-Limits**

For your child's safety and security, no one is allowed on the playground equipment before and after school hours. Playground equipment is only for Kalihi Waena students during the school hours supervised by a teacher or school staff member.



## **School Breakfast and Lunch**

School breakfast and lunch payments are accepted at the school office. We greatly appreciate your cooperation in paying in advance.

### **Meal prices**

Effective July 1, 2015

	Price
<b>BREAKFAST</b>	
Elementary student (PreK-8)	\$1.10
Secondary student (9-12)	\$1.20
Reduced-price student	\$0.30
Second and subsequent student	\$2.40
Adult	\$2.40
<b>LUNCH</b>	
Elementary student (PreK-8)	\$2.50
Secondary student (9-12)	\$2.75
Reduced-price student	\$0.40
Second student entrée	\$2.00
Second and subsequent student	\$5.50
Adult	\$5.50

If you have any questions or concerns, please feel free to contact our school office at 832-3210.

**\*JUST A REMINDER – Breakfast is served from 7:10 – 7:50 am.  
Please be prompt, as the kitchen door closes immediately at 7:50 am.**



Kalihi Waena

**PTA**

*everychild.onevoice.*



# **REMINDER**

## ***Fundraiser Pick-Up***

*(Giant Portuguese Sausage, Cinnamon Bread,  
Chocolate Chip Cookies & Hot Dog Manapua)*

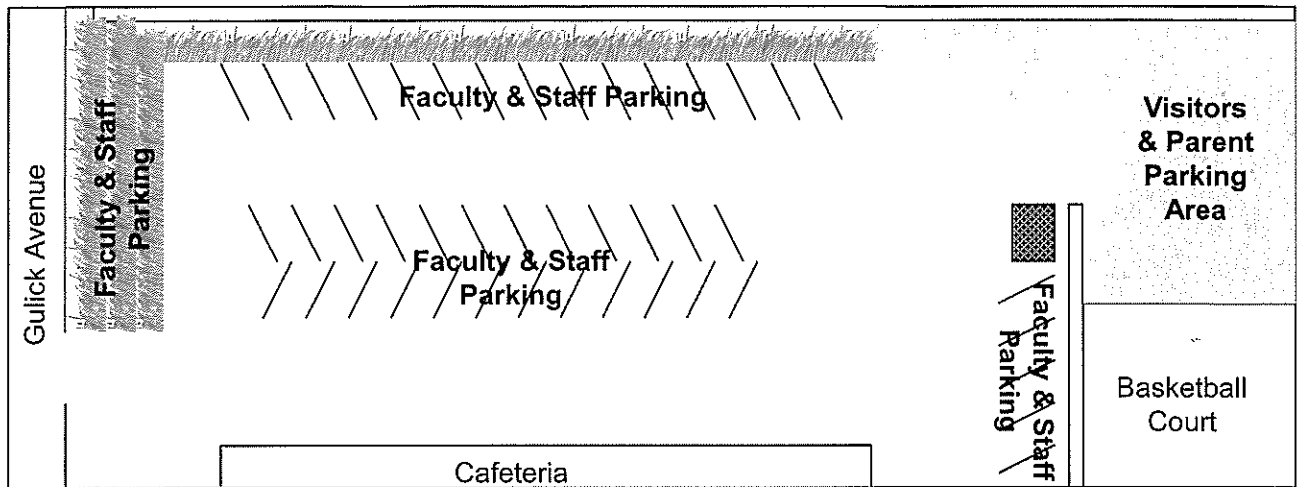
**Wednesday, October 2, 2019**

**1:30 - 5:30 p.m.**

**Kalihi Waena Cafeteria**

\*Please be sure to have your paid fundraising tickets ready upon pick-up\*

**ALL OUTSTANDING TICKETS THAT WERE NOT TURNED IN HAVE BEEN VOIDED  
AND WILL NOT BE HONORED ON PICK-UP DAY.**



**No Parking Zone**

Parents and staff, please remember that the cafeteria loading zone, located behind the back-side of the cafeteria, is a *No Parking Zone*. The red zone along side the cafeteria stairs, facing the employee parking lot, is a Drop Off Zone only. The parking stalls located at the school office and cafeteria lots are also for assigned employees. The grassy area along the stone wall and fence at the cafeteria lot are for assigned employees. Unauthorized vehicles in both parking lots will receive a Parking Violation notice, like the one pictured below. Parking in the handicap stalls without a handicap placard is a \$500 fine. Also, between 6:30am and 8:30 am Gulick Avenue bordering the school is a *NO PARKING ZONE*. HPD is on site between those times to ticket and tow any vehicle not in compliance. Due to limited space, we ask parents and visitors for their kokua and park in the designated area behind the employee parking lot, next to the basketball court.

For the children's safety, vehicles are not allowed in the office parking lot from 7:30 a.m. – 8:00 a.m. and 2:00 p.m. – 2:30 p.m. on Monday, Tuesday, Thursday and Friday. Wednesdays are from 7:30 a.m. – 8:00 a.m. and 1:15 p.m. – 1:45 p.m. Thank you for your cooperation!

Kalihi Waena Elementary School  
**Parking Violation**

Date: \_\_\_\_\_ Time: \_\_\_\_\_ AM / PM Initial: \_\_\_\_\_  
License Plate: \_\_\_\_\_ Car Make & Model: \_\_\_\_\_

We have identified that your vehicle was parked in a Staff Parking Stall. Currently, we do not have enough parking for all of our school staff members and all of the marked stalls are reserved for individuals who work with your child(ren). Please park outside along Gulick Ave or in the designated Visitor & Parent Parking Area (grassy/gravel area in the back of the parking lot). If we continue to find your car in violation, we will be forced to have your car towed at the expense of the owner. If you have any questions or need clarifications, please contact Kalihi Waena School at 832-3210.

The diagram shows the school's layout with labels. At the top left is Visitor & Parent Parking Area. To its right is Basketball Court. Below these is Staff Parking, with a downward arrow on the left and an upward arrow on the right. To the right of Staff Parking is a No Parking Cafeteria Delivery Zone. Below that is the Cafeteria. At the bottom is Gulick Avenue.

Fall 2019 Scholastic Book Fair

# ARCTIC ADVENTURE BOOK FAIR: *SNOW MUCH TO READ!*



Our school librarian, Mrs. Lam, thanks the entire Kalihi Waena Ohana, family and friends, for their support in making this year's "Arctic Adventure: Snow Much to Read" book fair a success!

Mrs. Lam and her volunteers, Les and Sandy Tamasaka, Laurie and Larry Okunami, Debbie Takahashi, Susan Nishimura, Dean Furukawa, Alia Aihara, and Bryan Tasaka worked very hard and did a beautiful job organizing the book fair so everyone could join the fun and expand their love of reading.

Thank you to our students, families, faculty and staff for their support in making this book fair a success!

---

## Kalihi Waena A+ Program REMINDERS

***\*Please register your child(ren) at the front office for after school care if you are interested!***

### Sign Out Procedures:

1. For the health and safety of all of our students, parents/guardians are required to sign out their child(ren) at the A+ Program Sign In/Out Table located at the front of the cafeteria.
2. Individuals picking up a child must show proper authorization to sign out a child. If no authorization is available, parents/guardians will be contacted to authorize release of the child(ren).
3. Program Aides and Group Leaders are instructed not to release any students to the parents without being notified via walkie talkie by the person at the A+ Sign In/Out Table.
4. Please notify the A+ Staff at ph.832-3210 during program hours (Mon, Tues, Thurs, & Fri @ 2:00 PM or Wed @ 1:30 PM) if your child will not be attending the A+ Program.

*Please understand that our procedures are put in place to ensure the safety and well being of your child(ren). If you have concerns with unauthorized individuals picking up your child, please contact the A+ Coordinator immediately to establish any safety precautions. Mahalo for your understanding and patience.*

*-Kalihi Waena A+ Program Staff*

## POLICY 101-14

### FAMILY AND COMMUNITY ENGAGEMENT/PARTNERSHIP

In setting expectations and creating a climate conducive to effective engagement/partnership implementation, the Board acknowledges the importance of administrative leadership at all levels, including its own. Therefore, the Board directs the Department to establish an organizational culture characterized by practices and programs that build and sustain positive and engaged relationships with families and communities by:

Building the capacity of staff and families to engage in partnerships;

Aligning with school achievement goals and connecting families to the teaching and learning goals for the students;

Taking a comprehensive and coordinated approach to family school engagement and community partnerships;

Addressing family school engagement/partnership in strategic planning processes;

Assigning formal responsibility, accountability and necessary authority for engagement/partnership implementation to appropriate staff at the State, Complex Area and School levels;

Embracing the diverse cultures, languages, strengths and needs of all families;

Providing adequate and appropriate time, resources and opportunities to include families in the design, implementation, evaluation and oversight of all relevant programs and services.

Establishing statewide standards, administrative guidelines, associated metrics/indicators, timelines and reporting requirements that support the implementation, monitoring and evaluation of family and community engagement/partnerships based upon national evidence-based best practices including, but not limited to:

Standard 1: Welcoming all families into the school community—Families are active participants in the life of the school and feel welcomed, valued, and connected to each other, to school staff, and to what students are learning and doing in class.

Standard 2: Communicating effectively—Families and school staff engage in regular two-way, meaningful communication about student learning.

Standard 3: Supporting student success—Families and school staff continuously partner to support students' learning and healthy development both at home and at school, and have regular opportunities to strengthen their knowledge and skills to do so effectively.

Standard 4: Speaking up for every child—Families are empowered to be advocates for their own and other children, to ensure that students are treated fairly and have access to learning opportunities that will support their success.

Standard 5: Sharing power—Families and school staff are equal partners in decisions that affect children and families and together inform, influence, and create policies, practices, and programs.

Standard 6: Engaging/partnering with community—Families and school staff engage/partner with community members to connect students, families, and staff to expanded learning opportunities, community services, and civic participation.

**Rationale:** The Board of Education (“Board”) recognizes that a child’s growth and educational success are responsibilities and goals shared by the Department of Education (“Department”), communities, schools and families. It follows that achievement of these goals depends on the establishment of a broad array of informed partnerships among stakeholders that address the strengths and needs of all students.

[Approved: 06/16/2015 (as Board Policy 101.14); amended: 06/21/2016 (renumbered as Board Policy 101-14)]

*Former policy 2403 history: approved: 05/03/2001; revised: 09/18/2003*

# Policy for Early Pick-Up

Parents/Guardians:

Please bring your ID or Driver's License when picking up your child early from school for doctor's/dentist's appointments, personal reasons, and in the health room. Authorized individuals listed on the emergency card and registration form will be allowed to pick your child up. Authorized individuals must be 18 years or older and have proper identification. Thank you for your cooperation!

-Kalihi Waena Administration



## Cell Phone Usage Policy for Students

All students who bring a cell phone to school need to be responsible for it throughout the day because the school will not be accountable for any lost or stolen cell phones.

From 8:00 am until 1:30 pm or 2:15 pm, all student cell phones need to be turned OFF.

- 1) If a student's cell phone goes off (rings) or a student is using the cell phone (talking or texting) during the school day, the teacher will take the cell phone away and give it to an Administrator. The parents will be responsible to get it back.
- 2) If a student's cell phone goes off (rings) or student is using the cell phone (talking or texting) a second time during the school day, the student will no longer be allowed to bring the phone to school.

If you have any questions or concerns, please contact our Principal, Mr. Larkin at 832-3210.

## IMPORTANT REMINDERS...



Kalihi Waena Parents,

School is the most important component in your child's academic development. We need your assistance with the following supports to ensure their continued academic growth.

1. **Plan vacations and trips during the summer, winter, fall and spring breaks.**
  - a. Too many absences impact student progress and learning.
  - b. Even if they are given work to complete during these trips and vacations, it will not replace the education they will receive during the academic school day.
2. **Update all contact information (i.e., phone numbers, addresses....) as soon as possible to ensure contact can be made in case of emergency.**
  - a. Please call 832-3210 to update student information.
3. **Bring your child to school daily and on time.**
  - a. In the State of Hawaii, we have a Compulsory Education Law that requires all parents to bring their child to school.
  - b. If your child does not attend school on a regular basis, the school will be required to file for Educational Neglect with the court system.
  - c. If you are having difficulty with your child attending school, please contact your child's teacher or counselor for assistance.
4. **Nutrition is an important component to fuel your child's body. Please make lunch money deposits when your child(ren)'s accounts start to run low.**
  - a. Student lunch accounts will no longer be allowed to run a deficit.
  - b. If no payment is made after the third day, the account will automatically be closed.
  - c. Your child will need to bring home lunch until the past due balance plus a deposit for future meals are made.
  - d. Please call 832-3210 to make payment arrangements.

*Mahalo for your continued support.*



## Kalihi Waena Student Dress Code Policy

(Created 5/15/2019)

*Purpose: To provide a safe learning environment*

Appropriate attire should be work throughout the instructional school day.

### Prohibited Clothing:

- Promoting drugs or alcohol-related images or words. Example: alcohol brands, cannabis (marijuana) leaf pictures.
- Promoting gang imagery or violence. Example: bandanas, guns, etc.
- Displaying profanity or symbols/emoji that mean profane words.
- Revealing clothing. Example: crop top shirts, strapless clothing.



### Footwear:

- Must have footwear on your feet.
- No cleats.



### Outdoor Wear:

- Hats/hoods can be worn only outside.
- Sunglasses can be worn only outside.



### Excursions:

- Wear a school shirt or clothing with school colors (Purple/Yellow).
- Closed-toe shoes may be mandatory for some outdoor field trips.



**\*\*Any exceptions must be cleared by Administration prior to the day or wear.**

### Consequences:

Students with inappropriate clothing will be sent to the office to either change their clothes or turn them inside out.

### Non-Compliance:

Chapter 19, Class C or D

## Kalihi Waena Birthday Policy

(Created 5/15/2019)

1. Teacher needs to be notified no later than 1 day prior to the event.
2. Parents must check in at the office prior to delivering items. (For safety and security purposes, all parents/guests should be wearing a visitor badge while on campus. Please sign in for one while checking in at the office.)

a. Authorized items include: (please limit to TWO suggested items)



- i. Goodie bags (example: pencils, erasers, stickers)
- ii. Cupcakes
- iii. Cookies
- iv. Fruit
- v. Yogurt
- vi. Individual Snack Size Potato Chips
- vii. Juice packs
- viii. Class gift (example: Books for class library, board games)



3. Drop offs must happen at 2:00 pm (Monday, Tuesday, Thursday or Friday). No deliveries on Wednesdays.

***\*\*Please be considerate of students who may have allergies.***



## OCTOBER

- 10/2 - PTA Fall Fundraiser Pick Up (1:30 – 5:30 pm, Café)
- 10/4 – End of Quarter 1
- 10/7 to 10/11 – Fall Break (NO SCHOOL)
- 10/22 – Lions Club Vision Screening
- 10/23 – Quarter 1 Report Cards go home
- 10/28 to 11/1 – Autumn Spirit Week
  - *Monday 10/28 – Pajama Day*
  - *Tuesday 10/29 – Fancy & Formal Day*
  - *Wednesday 10/30 – Dress as your Favorite Toy Story Character Day*
  - *Thursday 10/31 – Costume Day*
  - *Friday 11/1 – Aloha Wear Day*
- 10/30 – Parent Workshop & Activity Session (8 – 9 am, Café)

## NOVEMBER

- 11/1 – Autumn Spirit Week – Aloha Wear Day
- 11/11 – Veterans' Day Holiday (NO SCHOOL)
- 11/15 – Flu Vaccination Clinic
- 11/25 to 11/27 - Family Thanksgiving Luncheon
- 11/28 – Thanksgiving Day (NO SCHOOL)
- 11/29 – School Holiday (NO SCHOOL)

## DECEMBER

- 12/14 – Breakfast w/ Santa & S.T.E.M. Fair
- 12/18 – Dismissal Switch: **School Ends at 2:15 pm**
- 12/20 – Dismissal Switch: **School Ends at 1:30 pm**
- 12/20 – End of Quarter 2
- 12/23 to 12/31 – Winter Break (NO SCHOOL)

## JANUARY

- 1/1 to 1/3 – Winter Break (NO SCHOOL)
- 1/6 – Teacher Work Day (NO SCHOOL)
- 1/7 – Back To School!
- 1/20 – Martin Luther King, Jr. Day (NO SCHOOL)
- 1/31 to 2/11 - Student-Led Conferences (**School Ends at 12:30 pm**)






*\*Dates & Times are subject to change*

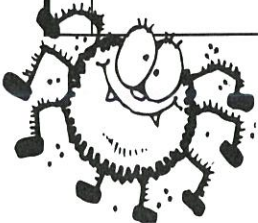


# Autumn Spirit Week

## (Disney Inspired)

October 28 - November 1, 2019

<p>MON OCT. 28</p>	<p><b>Sleeping Beauty - PAJAMA DAY</b> When all you want to do is sleep in and stay in bed, But coming to school is a must, so just come in your pajamas instead!</p> 
<p>TUES OCT. 29</p>	<p><b>Beauty &amp; the Beast - FANCY &amp; FORMAL DAY</b> Ladies &amp; Gents, come one, come all! Wear your fanciest threads fit for a magical ball.</p> 
<p>WED OCT. 30</p>	<p><b>Toy Story - TOY CHEST TREASURES DAY</b> Mr. Potato Head, Buzz, Woody and Bo Peep too... Dress like your favorite Toy Story character and come to life just like they do!</p> 
<p>THUR OCT. 31</p>	<p><b>COSTUME DAY</b> Dress in your Halloween costume. <i>(Students: remember to bring extra clothes to change into so you don't ruin your costume before trick-or-treating)</i></p> 
<p>FRI NOV. 1</p>	<p><b>Lilo &amp; Stitch - ALOHA WEAR DAY</b> Wear Hawaiian Print or Aloha Wear, we won't mind, because "OHANA &amp; ALOHA OVER EVERYTHING" and nobody gets left behind.</p> 



### \*Students & Families...

Please remember that toy weapons of any sort are **NOT** allowed in school. This rule especially applies to Halloween day, October 31st. Any student caught with toy knives, swords, pitch forks, arrows, water or toy guns, etc. will be suspended.

-Kalihi Waena Administration



# OCTOBER 2019



Sunday	Monday	Tuesday	Wednesday	Thursday	Friday	Saturday
"We are the Lions, we are the future!"		1	2 PTA Fundraiser Pick Up	3	4	5
6	7  Fall Break (NO SCHOOL)	8  Fall Break (NO SCHOOL)	9  Fall Break (NO SCHOOL)	10  Fall Break (NO SCHOOL)	11  Fall Break (NO SCHOOL)	12
13	14 Quarter 2 Begins	15	16	17	18	19
20	21	22  Lions Club Vision Screening	23  Report Cards Go Home	24 Frank deLima Assembly K-2 @ 10am 3-5 @ 10:30 am	25  Quarter 1 Awards Assembly 3-5 @ 8:45 am K-2 @ 10 am	26
27 	28 Autumn Spirit Week (Pajama Day)	29 Autumn Spirit Week (Fancy & Formal Day)	30 Parent Workshop & Activity Session 8 am, Cafeteria Autumn Spirit Week (Toy Story Character Day)	31 Autumn Spirit Week & Treat Street (Costume Day)	1 Autumn Spirit Week (Aloha Wear Day)	2 

## OCTOBER 2019 – Breakfast & Lunch Menu

MONDAY	TUESDAY	WEDNESDAY	THURSDAY	FRIDAY
	10/1/19 SLOPPY JOE / WW BUN Baked Beans / Veggie Stix Orange Wedges Choice of Milk ***** BAGEL W/ CREAM CHEESE Strawberry / Peaches Choice of Milk	10/2/19 TUNA SALAD SANDWICH Potato Rounds / Veggie Stix Fruit Slushy Choice of Milk ***** PANCAKES W/ SYRUP Banana / Applesauce Choice of Milk	10/3/19 CHESSE PIZZA Spinach / Romano Salad Fruit Cocktail Choice of Milk ***** GINGERBREAD CAKE Apple Wedge / Peaches Choice of Milk	10/4/19 CHICKEN FLORENTINE Rainbow Salad Apple Wedge Choice of Milk ***** PORK LINKS / RICE Orange Wedge / Pinechunks Choice of Milk
10/7/19 FALL BREAK NO SCHOOL	10/8/19 FALL BREAK NO SCHOOL	10/9/19 FALL BREAK NO SCHOOL	10/10/19 FALL BREAK NO SCHOOL	10/11/19 FALL BREAK NO SCHOOL
10/14/19 CHICKEN TENDERS Steamed Rice / Applesauce Rainbow Salad / Veggie Stix Choice of Milk ***** MAPLE PANCAKE WRAP Orange Wedge / Peaches Choice of Milk	10/15/19 CHILI Steamed Rice / Corn Fruit Cocktail Choice of Milk ***** KALUA QUESADILLA Apple Wedge / Pinechunks Choice of Milk	10/16/19 CORNDOG Spiral Fries Veggie Stix / Orange Wedge Choice of Milk ***** BELGIAN WAFFLE W/ SYRUP Strawberry / Pinechunks Choice of Milk	10/17/19 MEATLOAF / GRAVY Steamed Rice Steamed Veggies / Apple Wedge Choice of Milk ***** FRUIT SMOOTHIE / CINN TOAST Banana / Applesauce Choice of Milk	10/18/19 PEPPERONI PIZZA Veggie Stix Watermelon Choice of Milk ***** HAM LINKS / RICE Apple Wedge / Pinechunks Choice of Milk
10/21/19 CHICKEN PATTY SANDWICH Veggie Stix / Baked Beans Orange Wedge Choice of Milk ***** TURKEY EGG SLIDERS Apple Wedge / Fruit Cocktail Choice of Milk	10/22/19 ROAST PORK / GRAVY Steamed Rice / Corn Rainbow Salad / Apple Wedge Choice of Milk ***** CINNAMON ROLL Orange Wedge / Peaches Choice of Milk	10/23/19 BEEF STEW Steamed Rice / Corn Broccoli / Apple Wedge Choice of Milk ***** BANANA MUFFIN Strawberry / Fruit Cocktail Choice of Milk	10/24/19 HOT DOG IN BUN Potato Rounds Veggie Stix / Slushy Choice of Milk ***** HAM AND CHESSE ROLL Banana / Applesauce Choice of Milk	10/25/19 KOREAN CHICKEN Steamed Rice / Corn Rainbow Salad / Apple Wedge Choice of Milk ***** FR RICE / PORTUGUSE SAUSAGE Orange Wedge / Pinechunks Choice of Milk
10/28/19 HAMBURGER STEAK / GRAVY Steamed Rice Steamed Veggies / Orange Wedge Choice of Milk ***** PORK SAUSAGE PATTY / RICE Orange Wedge / Fruit Cocktail Choice of Milk	10/29/19 CHESSE PIZZA Rainbow Salad / Veggie Stix Watermelon Choice of Milk ***** PEPPERONI PIZZA STIX Grapes / Pinechunks Choice of Milk	10/30/19 BBO PORK SANDWICH Potato Wedge Coleslaw / Pinechunks Choice of Milk ***** HAM LINK / RICE Apple Wedge / Applesauce Choice of Milk	10/31/19 FISH SANDWICH Rainbow Salad Peaches Choice of Milk ***** BANANA BREAD Strawberry / Pinechunks Choice of Milk	

ALL STEAMED RICE IS 100% BROWN RICE

THIS INSTITUTION IS AN EQUAL OPPORTUNITY PROVIDER

ALL BREADS/BREADED ITEMS ARE WHOLE GRAIN

ALL MEALS INCLUDE A CHOICE OF HALF-PINT 1% or SKIM MILK

MENUS ARE SUBJECT TO CHANGE